



Keeping the World Flowing
for Future Generations



Model 90 and 91

Low / High Pressure Selector Relay

Features and Benefits

- Small, rugged design suitable for installation where space is limited
- Soft seat construction to assure positive shutoff
- Low selection differential to allow precise control of switching
- Fast response that is suitable for control in critical loops
- Automatic switching that eliminates manual monitoring of signal pressure

Operating Principles

The Model 90 Low Pressure Selector Relay is designed to select the lower of two signal pressures to provide a continuous output pressure to a control device. The Model 90 is recommended for dead end or low flow service in critical applications such as control loops requiring precise, automatic monitoring of signal pressures.

The Model 91 High Pressure Selector Relay is designed to select the higher of two signal pressures, and to provide a continuous output pressure (or pressure range) to a controller. The ability to precisely control switching and pressure monitoring make the Model 91 the logical choice in dead end or low flow applications such as precision control loops.

Specifications

Maximum Signal Pressure

- 200 psig, [14.0 BAR], (1400 kPa)

Minimum Switching Differential

- Less than .1 psig, [.007 BAR], (.7 kPa)

Maximum Differential between Signals

- 100 psig, [7.0 BAR], (700 kPa)

Ambient Temperature Range

- -40 to +200 °F, (-40 to +93.3 °C)

Materials of Construction

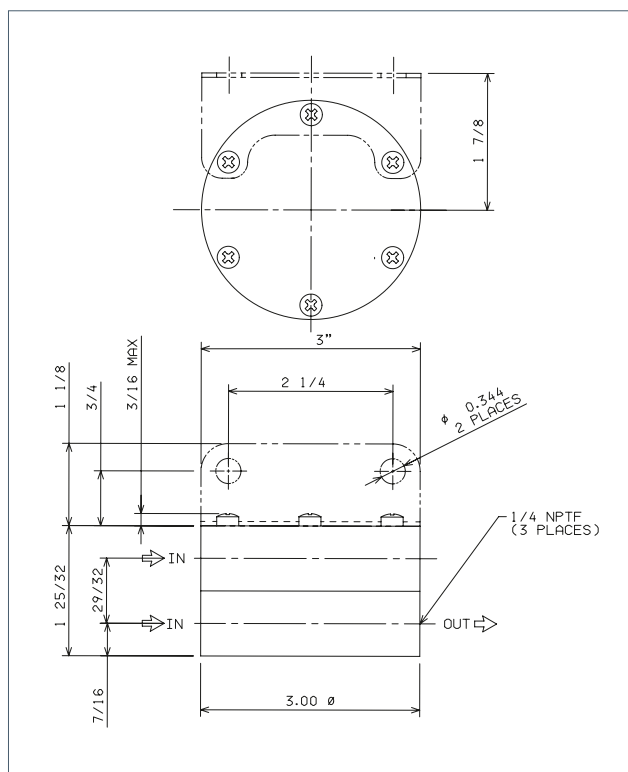
- Body: Aluminum Alloy
- Diaphragm: Dupont Fairprene-coated fabric
- Trim: Brass



Model 90 and 91

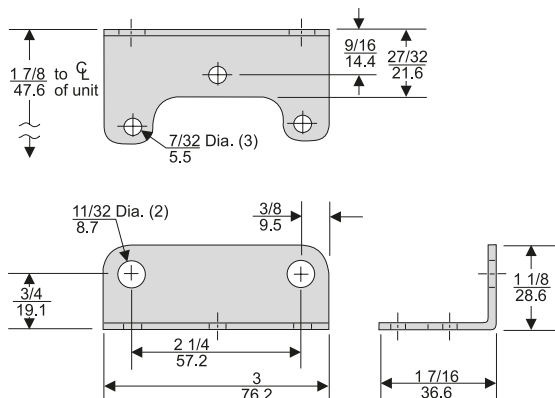
Low / High Pressure Selector Relay

Dimensions



Mounting Bracket Kit

P/N 09921 (sold separately)



Product Code

9 00 5 2 J

Pressure Range

00 = 90 Low Pressure
10 = 91 High Pressure

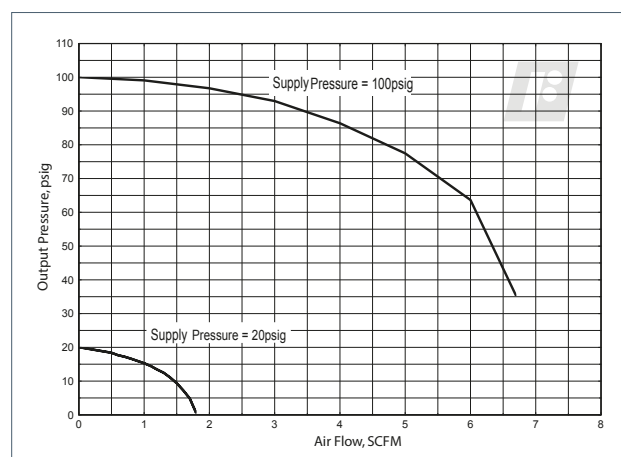
Pipe Size

2 = 1/4" NPT

Options

J = Fluorocarbon Elastomers
U = BSPT (Tapered)

Flow Characteristics (Model 90052)



Installation

Service Kits are available for the Model 90 and Model 91. Refer to the *Fairchild Model 90 and Model 91 Installation, Operation and Maintenance Instructions*, IS-30009091.

A full listing of the Rotork sales and service network is available on our website.

www.rotork.com

Rotork plc, Bath, UK
tel +44 (0)1225 733200
email mail@rotork.com

Fairchild Industrial Products
3920 West Point Blvd
Winston-Salem, NC 27103
tel +1 (336) 659-3400
fax +1 (336) 659-9323
email: US-WS-CS@Rotork.com

rotork®

Electric Actuators and Control Systems
Fluid Power Actuators and Control Systems
Gearboxes and Gear Operators
Precision Control and Indication
Projects, Services and Retrofit

PUB103-072-00
Issue 09/20

As part of a process of on-going product development, Rotork reserves the right to amend and change specifications without prior notice. Published data may be subject to change. For the very latest version release, visit our website at www.rotork.com.
The name Rotork is a registered trademark. Rotork recognises all registered trademarks. Published and produced in the UK by Rotork. POWJB0820