

DeltaSpan™ LD33

Submersible Anti-Corrosion Pressure Liquid Level Transmitter



Application

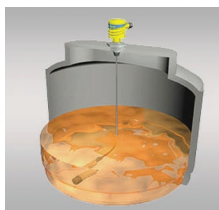
The LD33 general purpose anti-corrosion submersible pressure level transmitter provides continuous liquid level measurement up to 34.65' (10.5m) of water column with a 4-20 mA signal output. Constructed of corrosion-resistant PTFE, the sensor is offered in three level measurement ranges. Select the appropriate model based on your tank height. For convenient installation with junction box termination, package your level sensor with the PVDF pressure sensor mounting kit. Each kit includes a junction box with terminal strip, mounting plug and liquid tight cable connector. The LD33 pressure level sensor is well suited for clean liquids compatible with PTFE and FEP such as acidic and caustic chemicals.

Features

- Corrosion-resistant PTFE sensor body and FEP cable
- Rugged sensor designed for complete submergibility
- Maintenance-free vent tube with filter ensures accuracy
- Mounting kit for easy tank install and conduit termination
- Integral surge protection for lightning strikes or power surges
- Automatic temperature compensation for reliable measurement

Mounting Kit

The pressure sensor mounting kit makes installation easy. Route the sensor cable through the liquid tight connector, drop the sensor through the tank fitting, and terminate in the junction box.



Compatible Products



LI23 Series



LI55 Series

DATA-LOOP™ LEVEL INDICATOR

The general purpose loop powered tank or silo level indicator displays engineering units connected in series with one 4-20 mA continuous level transmitter, and is available with two optional relays and an isolated 4-20 mA repeater. Select this panel mount indicator for use with general purpose two-wire level sensors.

DATA-VIEW™ LEVEL CONTROLLER

The general purpose AC or DC powered tank or silo level controller displays engineering units with one 4-20 mA level transmitter and is offered in three configurations with optional two or four programmable relays and an isolated 4-20 mA repeater. Each relay can be configured on a single set point as a high or low level alarm, or latched on two set points for automatic fill or empty control in simplex or duplex modes. Select this panel mount controller for use with general purpose two or three-wire level sensors.

DeltaSpan™ LD33

Submersible Anti-Corrosion Pressure Liquid Level Transmitter



Specifications

Range:

- S_01: 0 to 5 psi (0.34 bar) or 0 to 11.55' (0 to 3.5m) wc
- S_11: 0 to 10 psi (0.69 bar) or 0 to 23.1' (0 to 7.0m) wc
- S_21: 0 to 15 psi (1.0 bar) or 0 to 34.65' (0 to 10.6m) wc

Accuracy: ± 0.25% of full scale

Configuration: None, fixed span

Supply voltage: 11 to 28 VDC

Loop resistance: 900 Ohms @ 30 VDC

Signal output: 4-20 mA, two-wire

Process temp.: F: 14° to 176°

C: -10° to 80°

Temp. comp.: Automatic

Burst pressure: 2 x full scale

Response time: 50ms

Sensor material: PTFE (polytetrafluoroethylene)

Enclosure material: NEMA 6P (IP68)

Cable type: 2-conductor, shielded with filtered vent tube

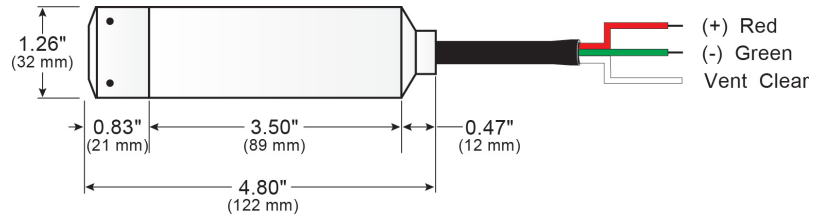
Cable material: FEP (fluorinated ethylene propylene)

Cable length: -S101 & S111: 40' (12.2m)
-S121: 60' (18.3m)

Classification: General purpose

Compliance: CE, RoHS

Dimensions



Fittings

For ease of installation and optimum performance, install the level sensor using the below recommended or direct equivalent fittings.

	P/N	DESCRIPTION
 PVDF	LD90-1001	Pressure mounting kit, 2" NPT plug, PP
	LD90-1061	Pressure mounting kit, 1½" G plug, PP
	LD90-5001	Pressure mounting kit, 2" NPT plug, PVDF
	LD90-5061	Pressure mounting kit, 1½" G plug, PVDF
	LM52-2890	2" NPT bulkhead fitting, PVC
	LM52-3890	3" NPT bulkhead fitting, PVC
	LM52-2850	2" x 2" NPT flange, PVC, schedule 80
	LM52-3850	3" x 3" NPT flange, PVC, schedule 80
	LM52-2400	3" x 2" NPT reducer, PVC, schedule 40
	LM50-5000	Pressure cable hanger, SS & PVC
	LD90-3000	Desiccant filter

Cable Hanger

The pressure cable hanger provides a convenient way to suspend, lock, adjust or remove your sensor via the cable in a sump or plating line.



Ordering

LD33-S1 ☐ 1

SENSOR RANGE (1)

0	5 psi (0.34 bar) / 11.55' (3.5m) wc
1	10 psi (0.69 bar) / 23.10' (7m) wc
2	15 psi (1.0 bar) / 34.65' (10.6m) wc

NOTES

- 1) Select the appropriate sensor range based on your tank height or sump depth.