

## **CERAMIC TUBE, NO MOUNTING FITTING**

### **How to build a part number:**

To order an Applied Sensor Technologies protection tube, select the requirements for the categories listed below and fill in the corresponding boxes with your selection. Don't see exactly what you need? Give us a call!

STYLE	TUBE DIAMETER	TUBE MATERIAL	LENGTH

#### **STYLE**

**CT1** – Ceramic protection tube, no mounting fitting

#### **TUBE DIAMETER**

##### **O.D.**

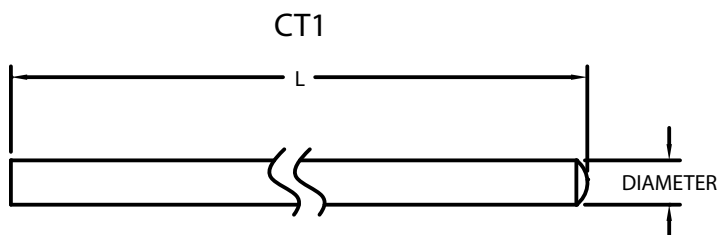
- 0** – 0.375"
- 1** – 0.5"
- 2** – 0.688"
- 3** – 0.75"
- 4** – 0.875"
- 5** – 1"
- 6** – 1.1"
- 7** – 1.25"
- 8** – 1.5"
- 9** – 1.75"

#### **TUBE MATERIAL**

- A** – Alumina
- M** – Mullite – not recommended for noble metal thermocouples
- H** – Hexalloy
- L** – LT-1
- S** – Sialon
- C** – Silicon carbide, oxide bonded

#### **LENGTH (in inches)**

**L#** – Specify length (e.g., L6 = 6" overall length)



## **CERAMIC TUBE, WITH MOUNTING FITTING OR NIPPLE**

### **How to build a part number:**

To order an Applied Sensor Technologies protection tube, select the requirements for the categories listed below and fill in the corresponding boxes with your selection. Don't see exactly what you need? Give us a call!

STYLE	TUBE DIAMETER	TUBE MATERIAL	INSTRUMENT CONNECTION	PROCESS CONNECTION	CONNECTION MATERIAL	CONNECTION LENGTH	LENGTH

#### **STYLE**

**CT2** – Ceramic protection tube with threaded hex fitting

**CT3** – Ceramic protection tube with pipe nipple

#### **TUBE DIAMETER**

##### **O.D.**

- 0** – 0.375"
- 1** – 0.5"
- 2** – 0.688"
- 3** – 0.75"
- 4** – 0.875"
- 5** – 1"
- 7** – 1.25"

#### **TUBE MATERIAL**

- A** – Alumina
- M** – Mullite – not recommended for noble metal thermocouples
- H** – Hexalloy
- L** – LT-1

#### **INSTRUMENT CONNECTION\***

- 0** – 1/2" NPT
- 1** – 3/4" NPT
- 2** – 1" NPT
- 3** – 1-1/4" NPT

#### **PROCESS CONNECTION\***

- 0** – 1/2" NPT
- 1** – 3/4" NPT
- 2** – 1" NPT
- 3** – 1-1/4" NPT

#### **CONNECTION MATERIAL**

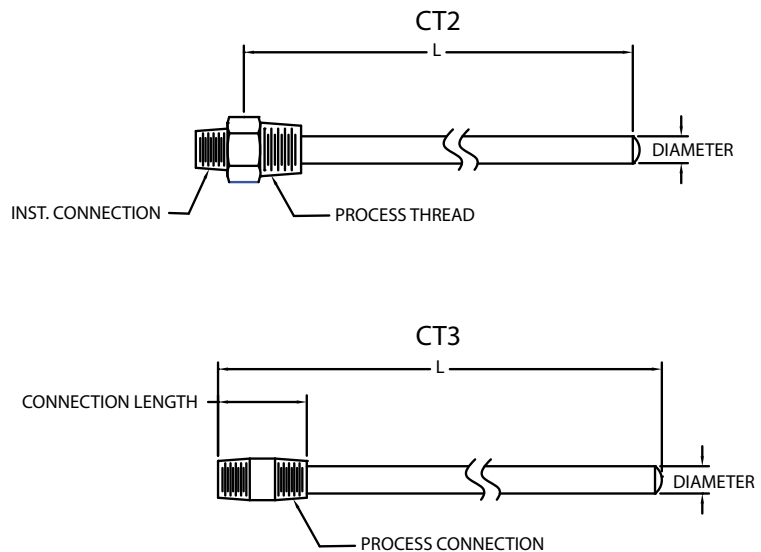
- Y** – 304 stainless steel
- W** – 316 stainless steel
- G** – Carbon steel

#### **CONNECTION LENGTH**

- 1** – CT2 only (hex fitting length)
- #** – CT3 only (length of nipple in inches; e.g., 6 = 6" nipple)

#### **LENGTH** (in inches)

**L#** – Specify length (For CT2, U is approximately L – 1"; for CT3, U is approximately L – the nipple length)



\*Note: For CT3, Instrument and Process Connection sizes must be the same.

## **METAL TUBE, PLAIN OR WITH MOUNTING BUSHING**

### **How to build a part number:**

To order an Applied Sensor Technologies protection tube, select the requirements for the categories listed below and fill in the corresponding boxes with your selection. Don't see exactly what you need? Give us a call!

STYLE	PIPE SIZE/ INSTRUMENT CONNECTION	PIPE SCHEDULE	PIPE & BUSHING MATERIAL	BUSHING SIZE	OVERALL LENGTH	INSERTION LENGTH

#### **STYLE**

**MT1** – Metal protection tube, threaded, no bushing

**MT2** – Metal protection tube, threaded, with bushing

#### **PIPE SIZE/INSTRUMENT CONNECTION**

Pipe Size	Connection
<b>1</b> – 1/2" pipe (0.840" dia.)	1/2" NPT
<b>2</b> – 3/4" pipe (1.050" dia.)	3/4" NPT
<b>3</b> – 1" pipe (1.315" dia.)	1" NPT

#### **PIPE SCHEDULE**

**40** – Schedule 40

**80** – Schedule 80

**160** – Schedule 160

#### **PIPE AND BUSHING MATERIAL**

**304** – 304 stainless steel

**310** – 310 stainless steel

**316** – 316 stainless steel

**316L** – 316L stainless steel

**321** – 321 stainless steel

**A20** – Alloy 20

**INC** – Inconel 600®

**400** – Monel 400®

#### **BUSHING SIZE**

**1** – 1/2" NPT

**2** – 3/4" NPT

**3** – 1" NPT

**4** – 1-1/4" NPT

**5** – 1-1/2" NPT

**7** – 2" NPT

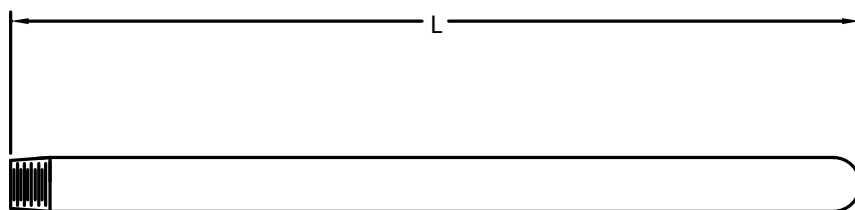
#### **OVERALL LENGTH** (in inches)

**L#** – Specify overall length of tube (e.g., L24 = 24" long tube)

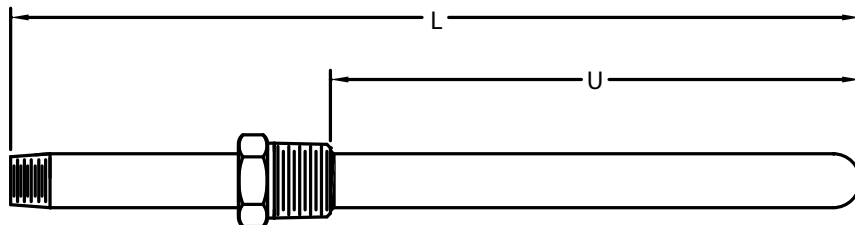
#### **INSERTION LENGTH** (MT2 only, in inches)

**U#** – Specify length below bushing connection (e.g., U6 = 6" below thread)

STYLE MT1



STYLE MT2



Inconel® and Monel® are registered trademarks of Special Metals Corp.

Hastelloy® is a registered trademark of Haynes Int'l.

## **METAL TUBE WITH MOUNTING FLANGE**

### **How to build a part number:**

To order an Applied Sensor Technologies protection tube, select the requirements for the categories listed below and fill in the corresponding boxes with your selection. Don't see exactly what you need? Give us a call!

STYLE	PIPE SIZE/ INSTRUMENT CONNECTION	PIPE SCHEDULE	PIPE & FLANGE MATERIAL	FLANGE SIZE	FLANGE RATING	FLANGE TYPE	OVERALL LENGTH	INSERTION LENGTH

#### **STYLE**

**MT4** – Metal protection tube, threaded, with flange

#### **PIPE SIZE/INSTRUMENT CONNECTION**

Pipe Size	Connection
<b>1</b> – 1/2" pipe (0.840" dia.)	1/2" NPT
<b>2</b> – 3/4" pipe (1.050" dia.)	3/4" NPT
<b>3</b> – 1" pipe (1.315" dia.)	1" NPT

#### **PIPE SCHEDULE**

**40** – Schedule 40  
**80** – Schedule 80  
**160** – Schedule 160

#### **PIPE AND FLANGE MATERIAL**

**304** – 304 stainless steel  
**310** – 310 stainless steel  
**316** – 316 stainless steel  
**316L** – 316L stainless steel  
**321** – 321 stainless steel  
**A20** – Alloy 20  
**INC** – Inconel 600®  
**400** – Monel 400®

#### **FLANGE SIZE**

**1** – 1" flange  
**1.5** – 1.5" flange  
**2** – 2" flange  
**3** – 3" flange  
**4** – 4" flange

#### **FLANGE RATING**

**150** – 150# flange rating  
**300** – 300# flange rating  
**600** – 600# flange rating  
**900/1500** – 900/1500# flange rating

#### **FLANGE TYPE**

**RF** – Raised face  
**FF** – Flat face  
**RTJ** – Ring type joint

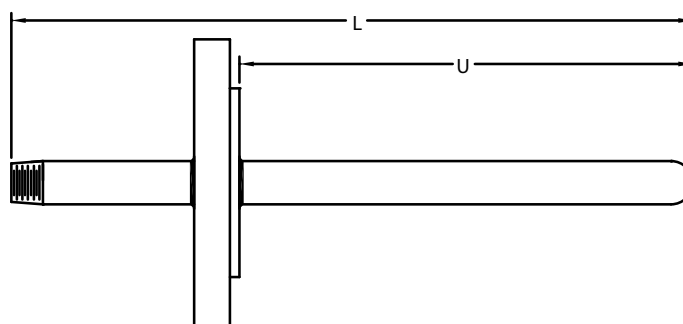
#### **OVERALL LENGTH** (in inches)

**L#** – Specify overall length of tube (e.g., L24 = 24" long tube)

#### **INSERTION LENGTH** (in inches)

**U#** – Specify length below flange (e.g., U6 = 6" below flange)

**STYLE MT4**



Inconel® and Monel® are registered trademarks of Special Metals Corp.  
Hastelloy® is a registered trademark of Haynes Int'l.

## **SPECIAL SECONDARY (OUTER) TUBE WITH MOUNTING BUSHING**

### **How to build a part number:**

To order an Applied Sensor Technologies protection tube, select the requirements for the categories listed below and fill in the corresponding boxes with your selection. Don't see exactly what you need? Give us a call!

STYLE	TUBE DIAMETER	TUBE MATERIAL	INSTRUMENT CONNECTION	PROCESS CONNECTION	BUSHING MATERIAL	OVERALL LENGTH

#### **STYLE**

**PT2** – Outer protection tube, with bushing, to be used with inner ceramic protection tube (Style CT2 or CT3)

#### **TUBE DIAMETER**

- 3** – 3/4" O.D.
- 4** – 7/8" O.D.
- 5** – 1" O.D.
- 6** – 1-1/10" O.D.
- 7** – 1-1/4" O.D.
- 8** – 1-1/2" O.D.
- 9** – 1-3/4" O.D.

#### **TUBE MATERIAL**

- C** – Silicon carbide, oxide bonded
- S** – Sialon
- H** – Hexalloy
- L** – LT1 metal ceramic

#### **INSTRUMENT CONNECTION**

- 0** – 1/2" NPT
- 1** – 3/4" NPT

#### **PROCESS CONNECTION**

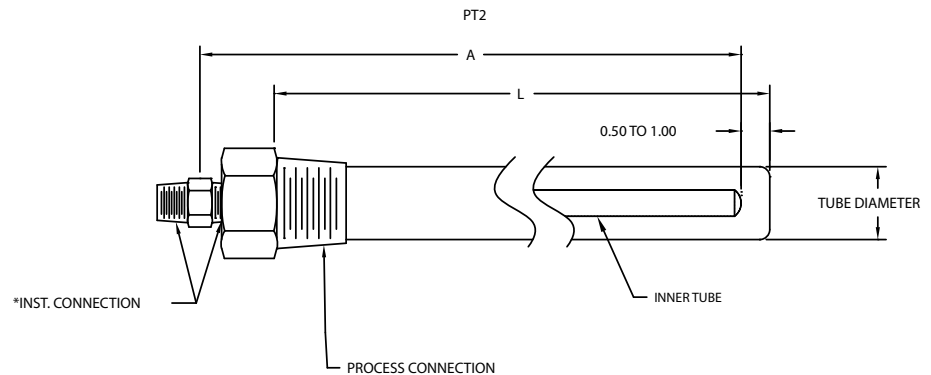
- 2** – 1" NPT
- 3** – 1-1/4" NPT
- 4** – 1-1/2" NPT
- 5** – 2" NPT

#### **BUSHING MATERIAL**

- G** – Carbon steel
- W** – 316 stainless steel

#### **OVERALL LENGTH** (in inches)

**L#** – Specify length of tube including threads  
(e.g., L24=24" long tube)



Use CT2/CT3 spec sheet to specify inner protection tube, using appropriate O.D. from chart below:

OUTER TUBE O.D.	INNER TUBE O.D.
3/4"	.375"
7/8"	.375"
1"	.375"
1.10"	.375"
1-1/4"	.688"
1-1/2"	.688"
1-3/4"	.75"

Note: to match inner tube length to outer, inner length (A) = outer tube length (L) + 0.75"

PROCESS THREAD (NPT)					
OUTER TUBE O.D.	CODE	2 (1")	3 (1-1/4")	4 (1-1/2")	5 (2")
	3 (3/4")	H	H	H	H
	4 (7/8")	L,S	L,S	L,S	L,S
	5 (1")		H	H	H
	6 (1-1/10")		S	S	S
	7 (1-1/4")			H	H
	8 (1-1/2")			H	H
	9 (1-3/4")				C

#### **Notes:**

- Not all materials and process thread sizes are compatible with all tubing O.D.'s. Use the chart below as a guide for the possible combinations. For each combination of thread and O.D., available materials are noted – Silicon Carbide (C), Sialon® (S), Hexalloy® (H) and LT1 (L).
- Applied Sensor Technologies recommends alumina protection tubes when using platinum thermocouples. Mullite, although less expensive when compared to alumina, can contaminate the platinum, causing drift.

## **SPECIAL SECONDARY (OUTER) TUBE WITH MOUNTING FLANGE**

### **How to build a part number:**

To order an Applied Sensor Technologies protection tube, select the requirements for the categories listed below and fill in the corresponding boxes with your selection. Don't see exactly what you need? Give us a call!

STYLE	TUBE DIAMETER	TUBE MATERIAL	SLIP FLANGE SIZE	OVERALL LENGTH

#### **STYLE**

**PT3** – Outer protection tube, with 4-7/8" mounting flange for mounting, to be used with inner ceramic protection tube (Style CT2 or CT3)

#### **TUBE DIAMETER**

**9** – 1-3/4" O.D.

#### **TUBE MATERIAL**

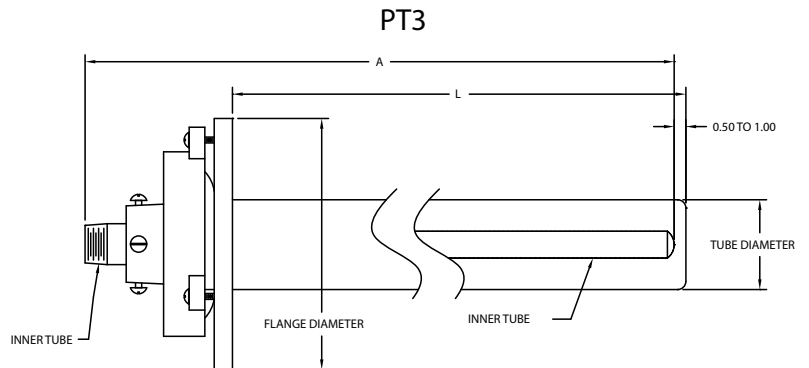
**C** – Silicon carbide, oxide bonded

#### **SLIP FLANGE SIZE**

**5** – 4-7/8"

#### **OVERALL LENGTH** (in inches)

**L#** – Specify length of tube below flange  
(e.g., L24=24" long tube)



Notes – when inner protection tube is required:

1. Use CT2/CT3 spec sheet to specify inner tube.
2. Style should be CT3 with a 3/4" diameter to match up with 1-3/4" outer tube.
3. Minimum nipple length should be 4" in order to extend past the collar.
4. Length of inner tube (A) should be equal to outer tube length (L) + 2.5".
5. Applied Sensor Technologies recommends alumina inner protection tubes when using platinum thermocouples. Mullite, although less expensive when compared to alumina, can contaminate the platinum, causing drift.