

# High Purity PTFE Air-Operated Double Diaphragm Pumps

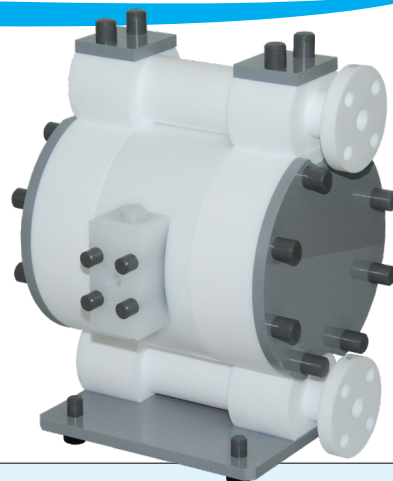


## TTD Series



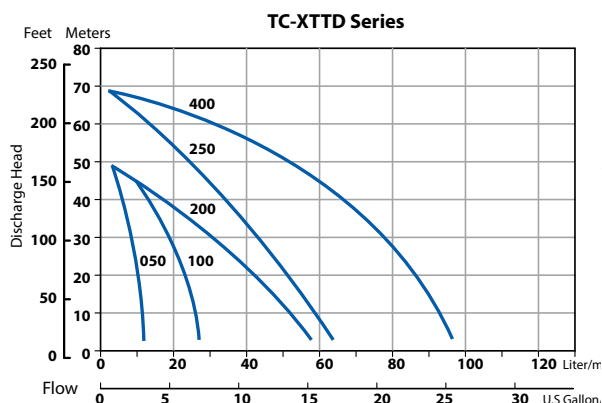
Available in 6 Flow Sizes with a wide range of options and accessories

Specifically designed to transfer highly corrosive chemicals, including slurries, in clean room chemical transfer applications for the manufacture of electronic components, solar panels and semiconductors. Improved pump design with reduced air consumption and incorporating the patent pending Looped C air motor for increased reliability and extended parts life. Fully bolted and torqued pumps with built in design features to resist material creep and reduced chance of leaks forming over time. Totally non-lubricated air motor technology. Designed to insure low particle counts and reduced chance of metallic ion contamination within a process. Class 100 clean room manufactured, packed and double bagged. Multiple connection types available to match your application needs.



High Purity PTFE Pump Models						
Model Code:	TC-X030TTD	TC-X050TTD	TC-X100TTD TC-X100TT-FL	TC-X200TTD TC-X200TTD-FL	TC-X250TTD-FL	TC-X400TTD-FL
Max Flow Rate:	2.16 GPM (8.2 LPM)	2.91 GPM (11 LPM)	7.13 GPM (27 LPM)	14.3 GPM (54 LPM)	17.2 GPM (65 LPM)	25.1 GPM (95 LPM)
Connection Size:	1/4" (6mm)	1/4" (6mm)	3/8" (10mm)	3/4" (20mm)	1" (25mm)	1" (25mm)
Connection Type:	Threaded	Threaded	Thread or Flange	Thread or Flange	Thread or Flange	Flange
Check Valves:	Flat	Flat	Ball or Flat	Ball or Flat	Ball or Flat	Ball or Flat
Max Slurry Solids Size:	0 mm	0 mm	1 mm	2 mm	3mm	3mm (Ball valve)
Air Pressure Range:	30-73 PSI (0.2 ~ 0.5 MPa)					
Description:	High Purity Virgin PTFE Diaphragm Pumps manufactured specifically for use in the Micro-Electronics and Semiconductor Industries. Available in 6 Flow ranges. Class 1000 Clean Room Assembled Tested & Packed. Available with Threaded & Flanged Liquid Connections, Ball & Flat Check Valves options on some models.					
Wetted Body Materials	High Purity PTFE					
Diaphragm / Valve Materials	PTFE on all Models					
Certification:	CE					
Specialized Options & Accessories	Filter Regulator, Flaretek connections, Leak Sensor, High performance muffler, NPT/ ANSI connections, Automatic Spool reset switch, High performance Spring retainers, Stroke counter, PTFE Coated Tie-rods, PTFE coated SUS reinforcement Plate. Pulsation Dampener. H Series High Temperature model for Liquid temperatures up to 150 C, E-Series Electric Solenoid Controlled Pumps with Proximity Sensor.					

## PERFORMANCE CURVES



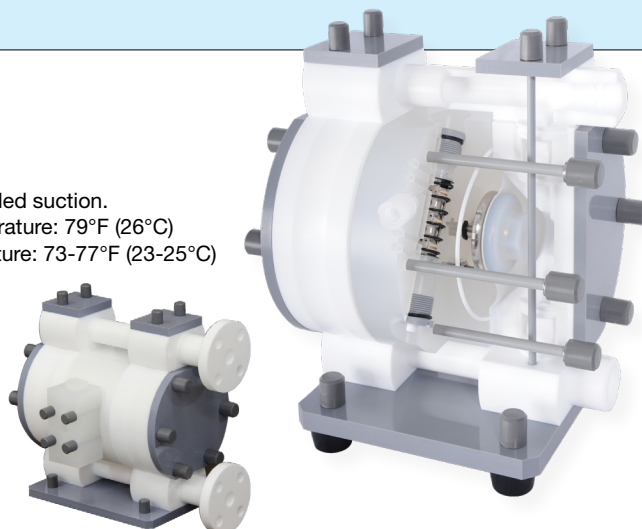
Flow

Conditions:

4" (10 cm) flooded suction.

Ambient temperature: 79°F (26°C)

Liquid temperature: 73-77°F (23-25°C)



# Performance Curves

